



32 Seaton Drive, Ashford, TW15 3ET

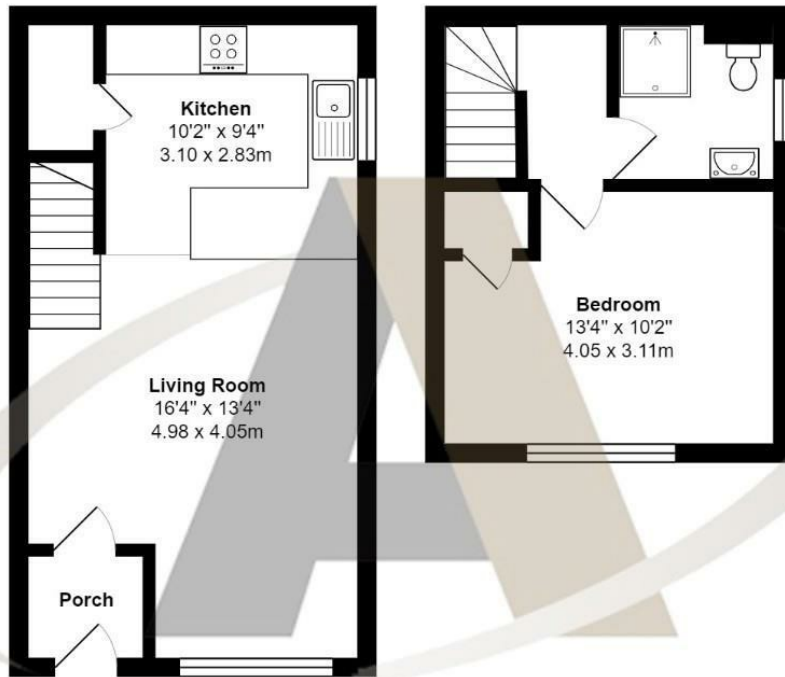
£1,400 Per Month

32 Seaton Drive, Ashford, TW15 3ET

Aspen Estate Agents are delighted to introduce this one-bedroom house in Seaton Drive, Ashford. Accommodation comprises a large reception room which is open plan to the modern kitchen. Upstairs this property has a shower room and a double bedroom with a built-in cupboard and plenty of space for additional storage. Outside this property has its very own garden and an allocated parking space. Prompt viewings are encouraged and can be booked by calling Aspen Estate Agents.



Floor Plan



Seaton Drive, Ashford

Total Area: 566 ft² ... 52.6 m²

All measurements are approximate and for display purposes only



Features

- One Bedroom House
- Own Private Garden
- Modern Kitchen
- Available August 2026
- Allocated Parking
- Fully Tiled Showerroom

Aspen Residential Services
77 Church Road, Ashford, Surrey, TW15 2PE
Tel: 01784 252 202
Email: enquiries@aspensalesandlettings.com



Tenure - Council Tax Band - C

